



LOWER FARMINGTON RIVER / SALMON BROOK

Wild and Scenic Study

Avon, Bloomfield, Burlington, Canton, East Granby, Farmington, Granby, Hartland, Simsbury and Windsor Connecticut

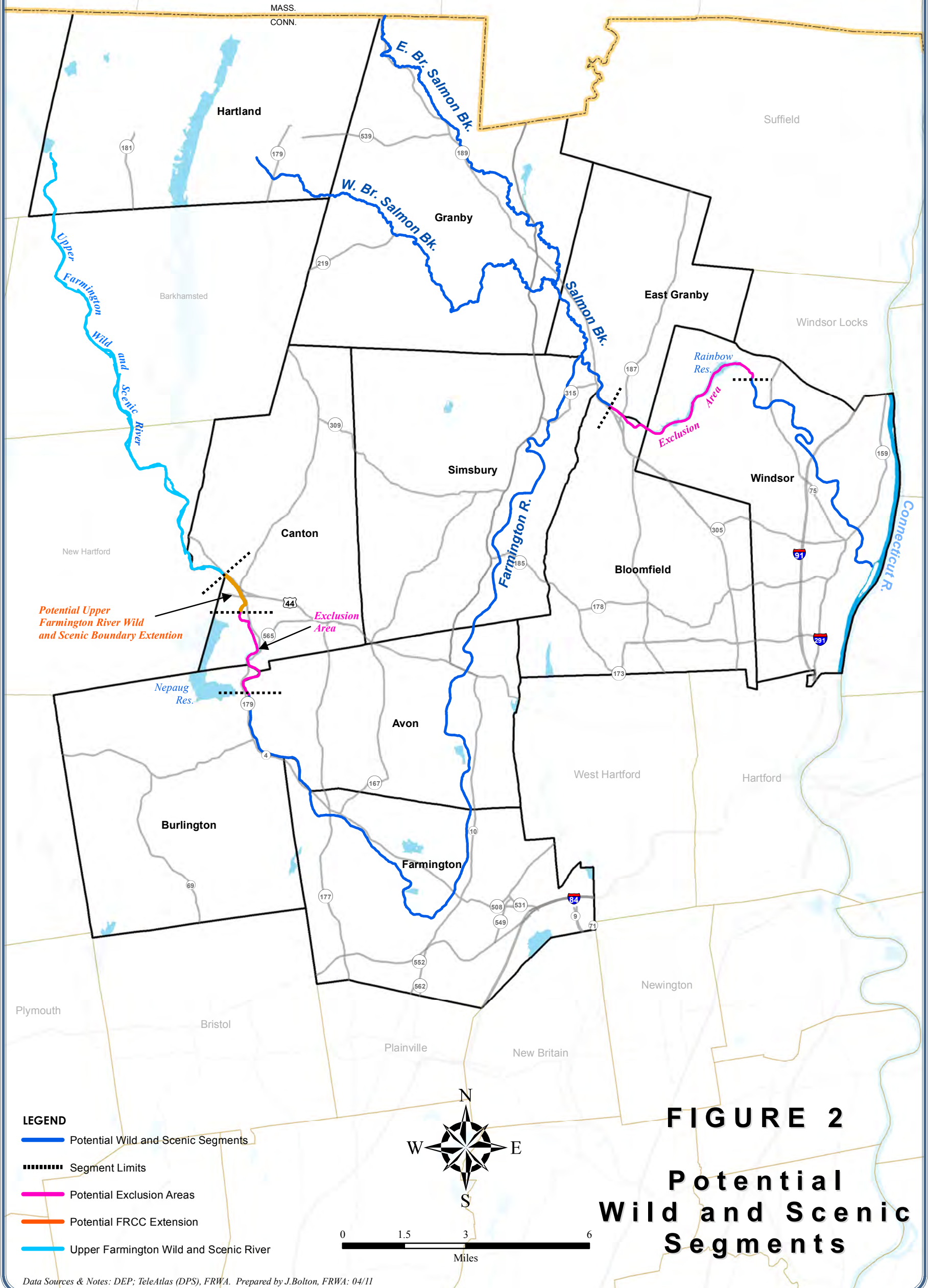


FIGURE 2

Potential Wild and Scenic Segments

- LEGEND**
- Potential Wild and Scenic Segments
 - Segment Limits
 - Potential Exclusion Areas
 - Potential FRCC Extension
 - Upper Farmington Wild and Scenic River



Data Sources & Notes: DEP; TeleAtlas (DPS), FRWA. Prepared by J. Bolton, FRWA: 04/11