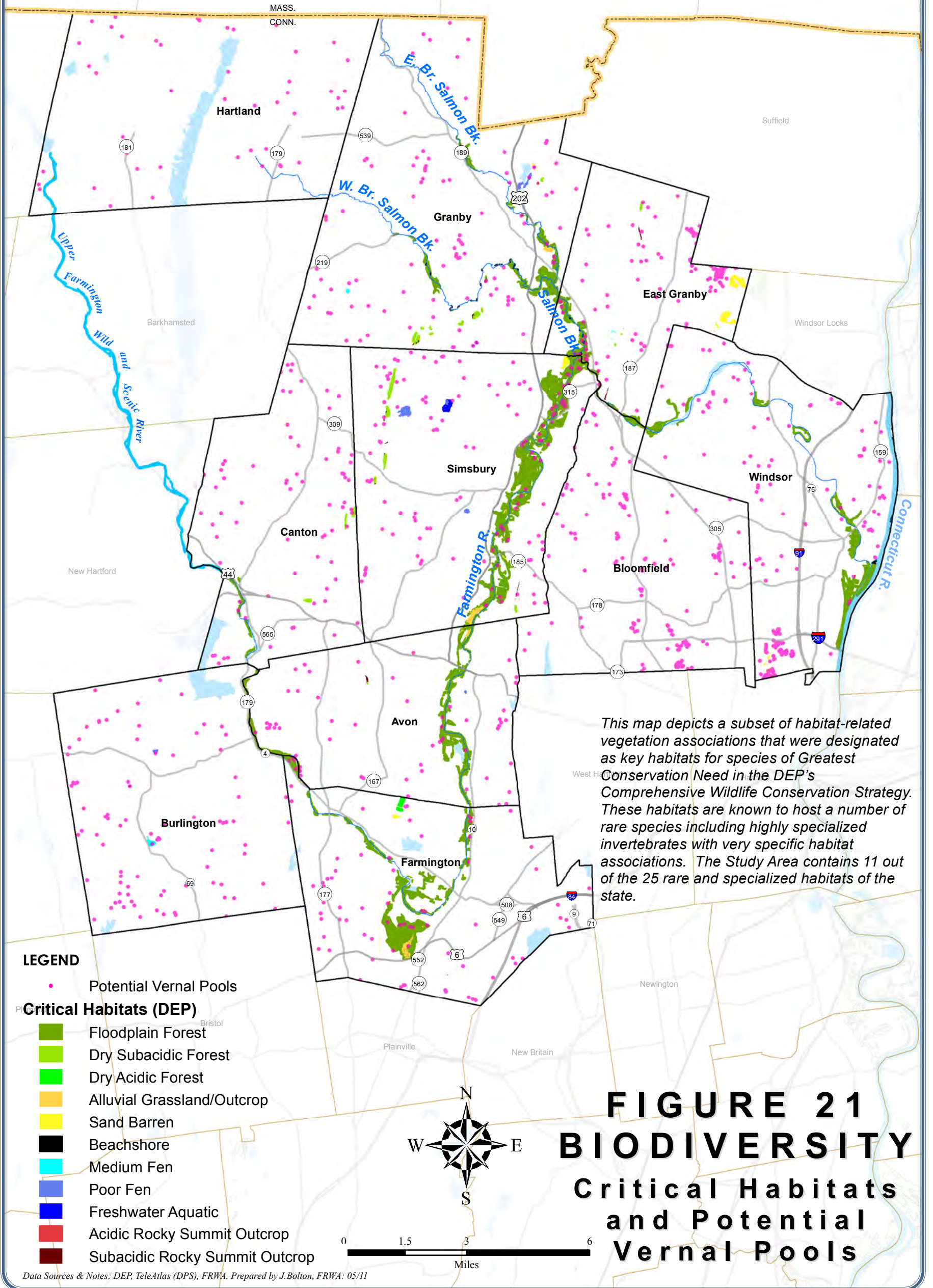




LOWER FARMINGTON RIVER / SALMON BROOK

Wild and Scenic Study

Avon, Bloomfield, Burlington, Canton, East Granby, Farmington, Granby, Hartland, Simsbury and Windsor Connecticut



This map depicts a subset of habitat-related vegetation associations that were designated as key habitats for species of Greatest Conservation Need in the DEP's Comprehensive Wildlife Conservation Strategy. These habitats are known to host a number of rare species including highly specialized invertebrates with very specific habitat associations. The Study Area contains 11 out of the 25 rare and specialized habitats of the state.

Data Sources & Notes: DEP, TeleAtlas (DPS), FRWA. Prepared by J. Bolton, FRWA: 05/11