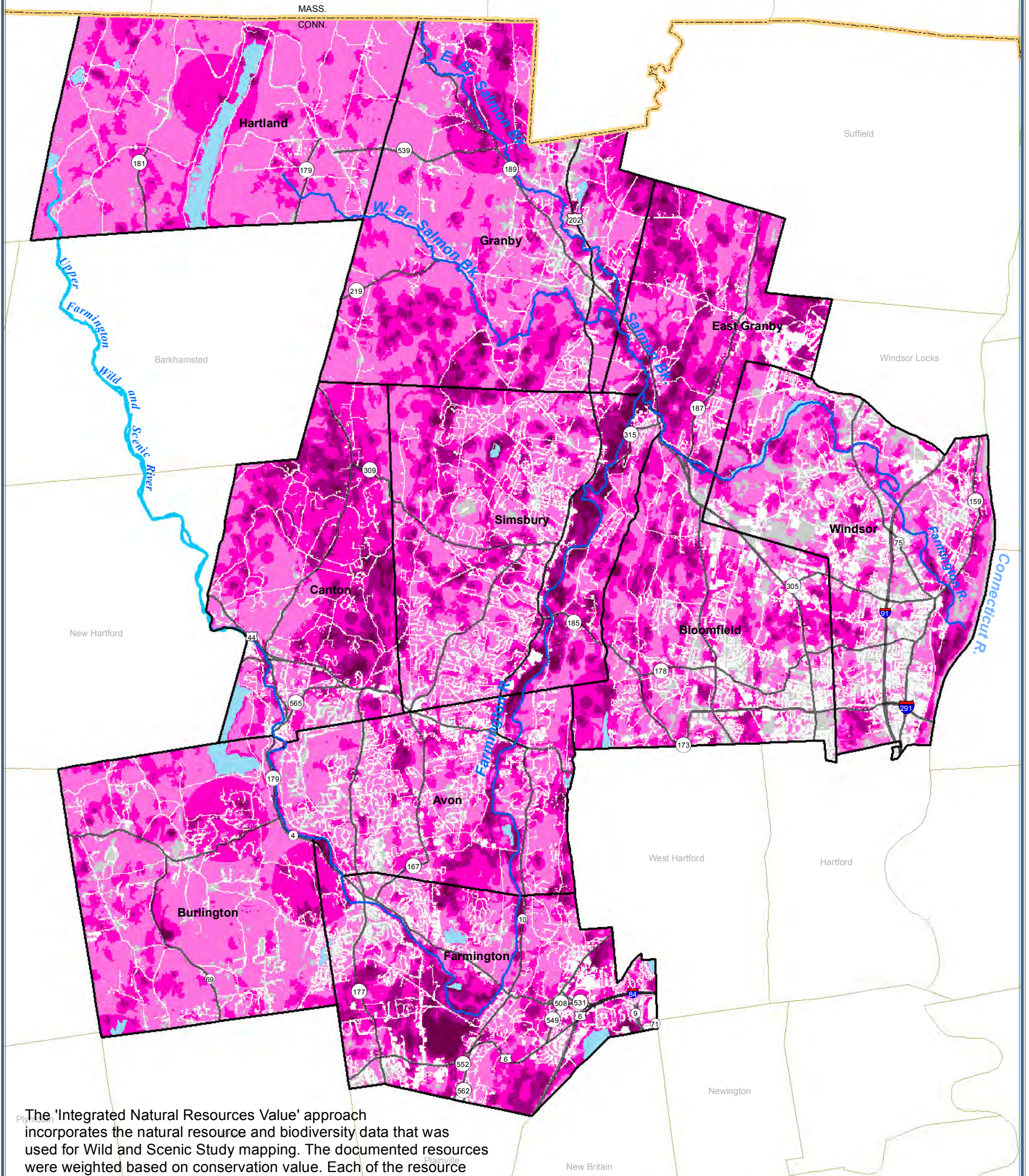




# LOWER FARMINGTON RIVER / SALMON BROOK

## Wild and Scenic Study

Avon, Bloomfield, Burlington, Canton, East Granby, Farmington, Granby, Hartland, Simsbury and Windsor Connecticut



The 'Integrated Natural Resources Value' approach incorporates the natural resource and biodiversity data that was used for Wild and Scenic Study mapping. The documented resources were weighted based on conservation value. Each of the resource mapping layers were then "added up" into this graphic presentation. The dark pink color represents the areas that met the greatest number of conservation value criteria.

### LEGEND

#### VALUE

-  Highest Natural Resource Values
-  High Natural Resource Values



**FIGURE 25**  
**BIODIVERSITY**  
Integrated Natural Resources Values

Data Sources & Notes: CLEAR; DEP, TeleAtlas (DPS), FRWA. Prepared by J. Bolton, FRWA: 05/11