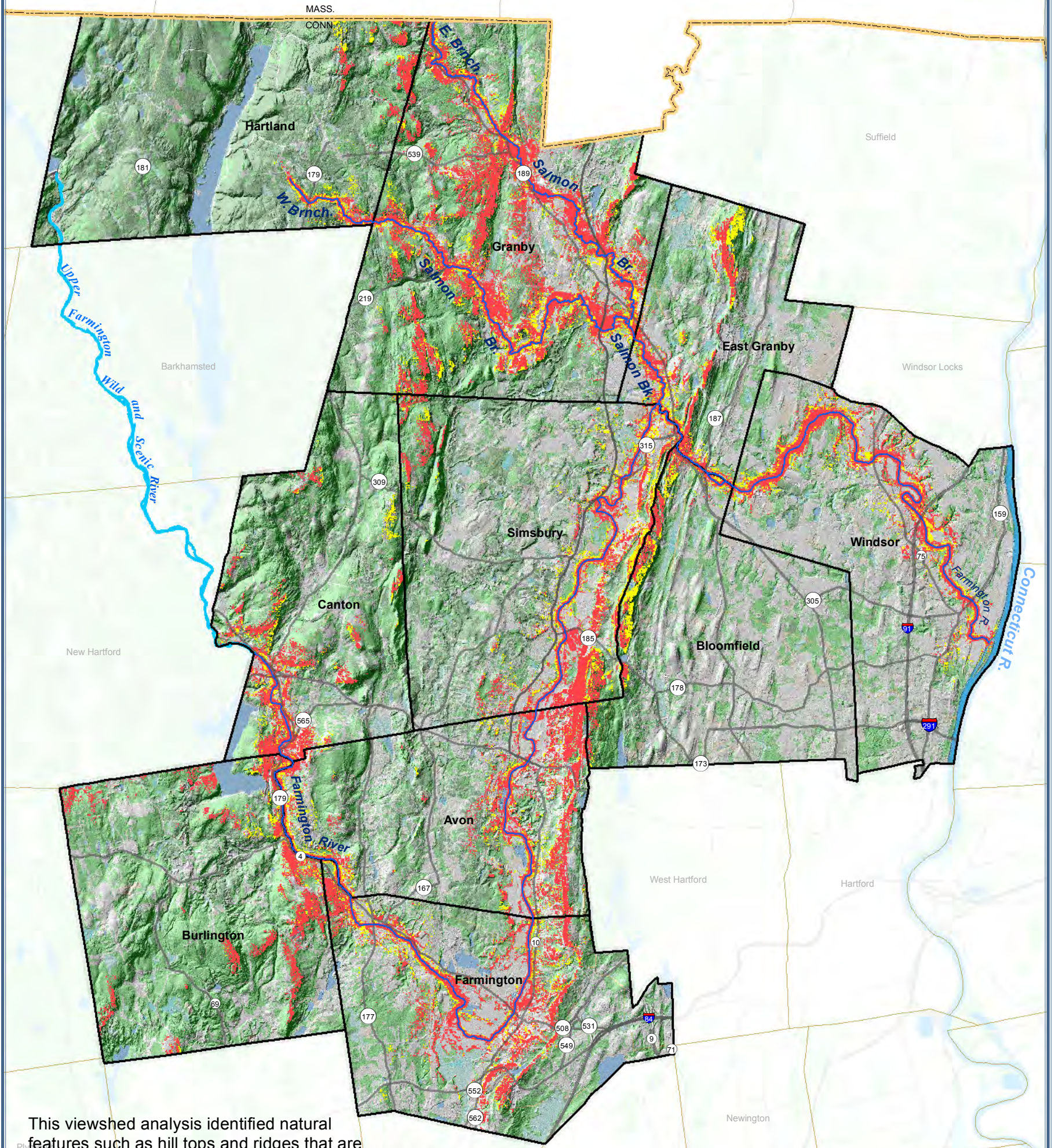




LOWER FARMINGTON RIVER / SALMON BROOK

Wild and Scenic Study

Avon, Bloomfield, Burlington, Canton, East Granby, Farmington, Granby, Hartland, Simsbury and Windsor Connecticut



This viewshed analysis identified natural features such as hill tops and ridges that are visible from the centerlines of both the Farmington River and Salmon Brook. These identified areas reflect the multiple viewsheds that are integral to the scenic experience from the Farmington River and Salmon Brook. This analysis incorporated forested land cover and also distinguishes between winter (leaf-off) and summer viewsheds.

Viewsheds from Farmington River and Salmon Brook

- Summer & Winter Viewsheds
- Winter Viewshed Only



FIGURE 34 RECREATION

Scenic Viewshed Analysis